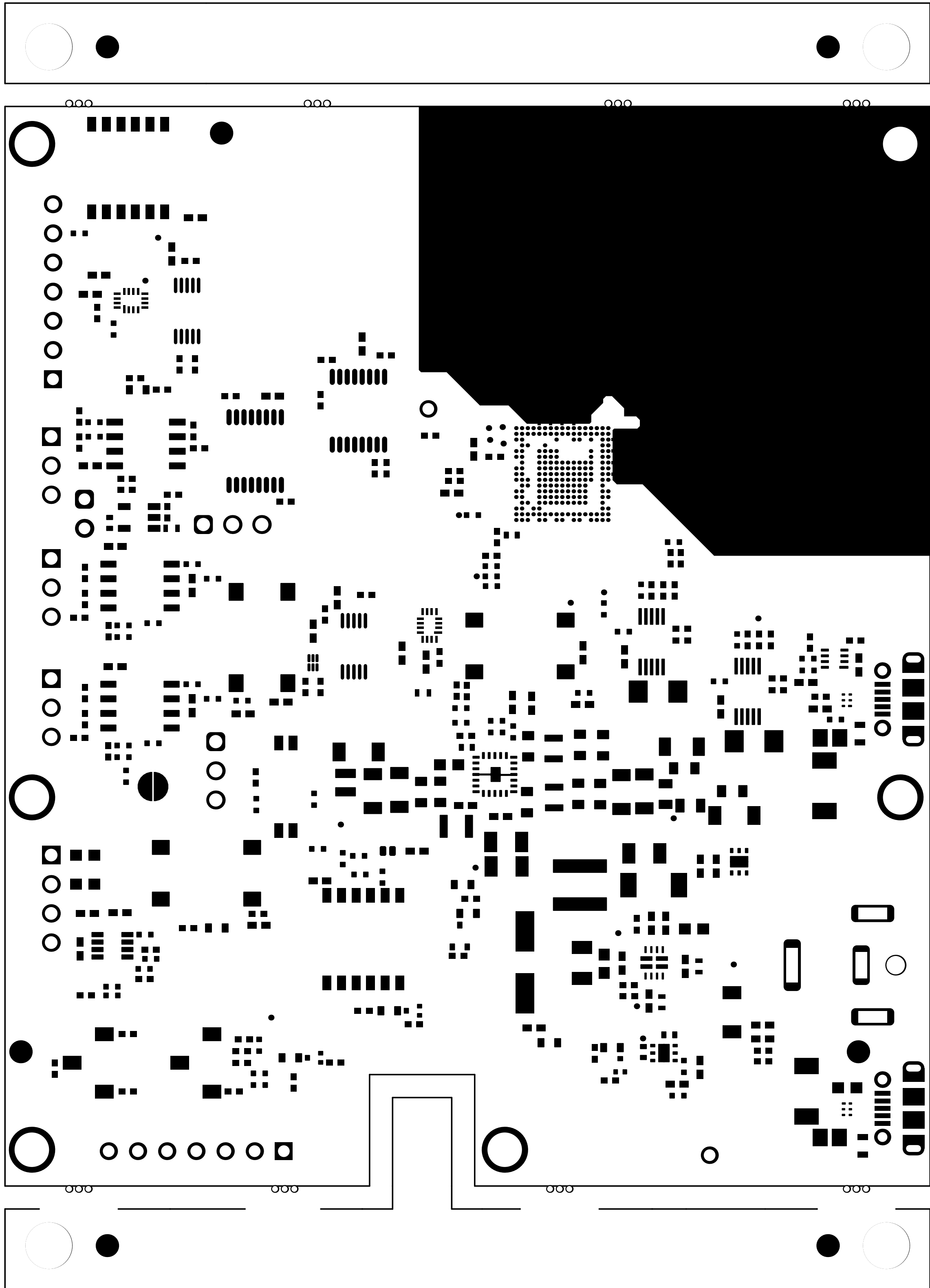
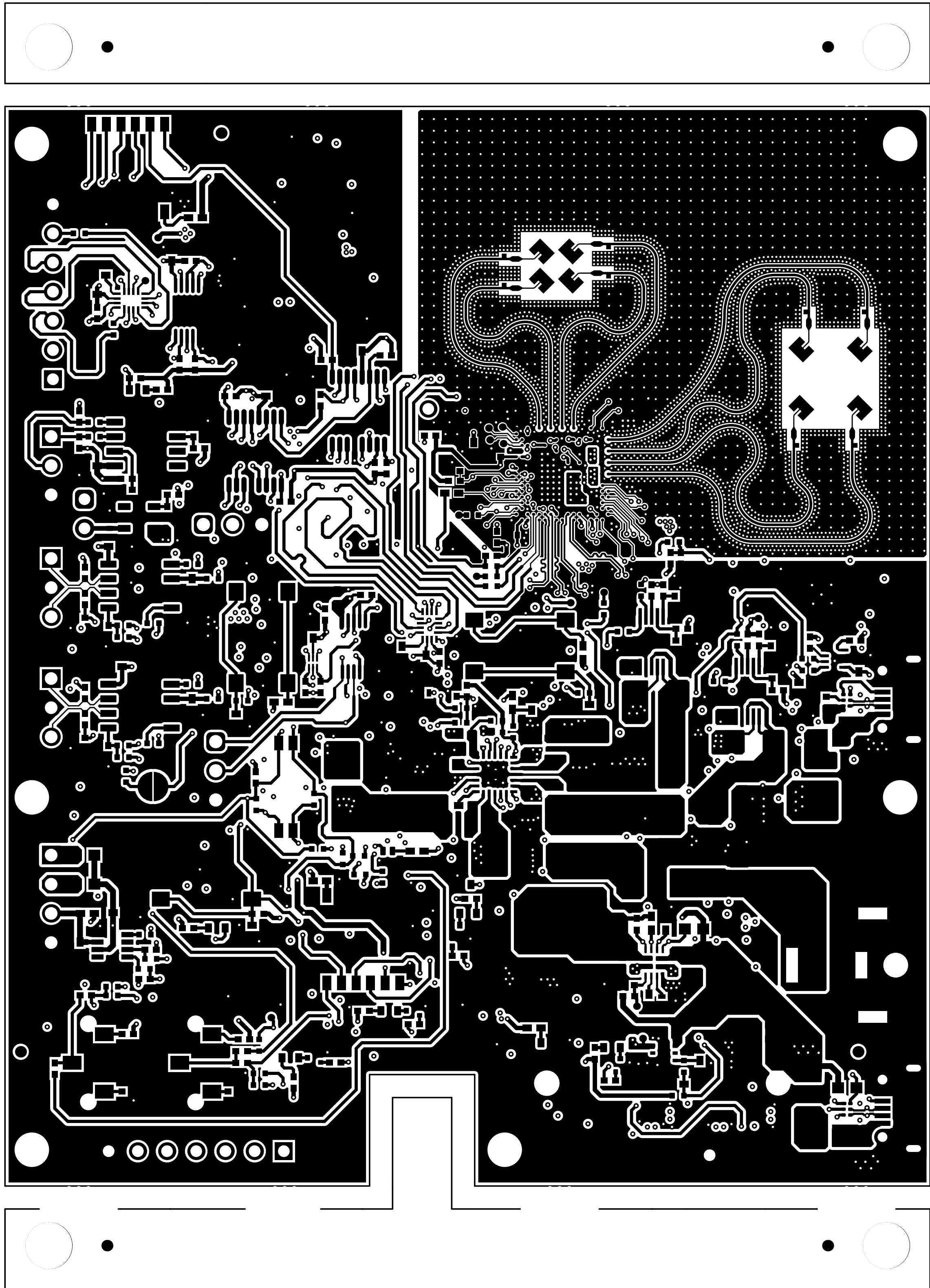


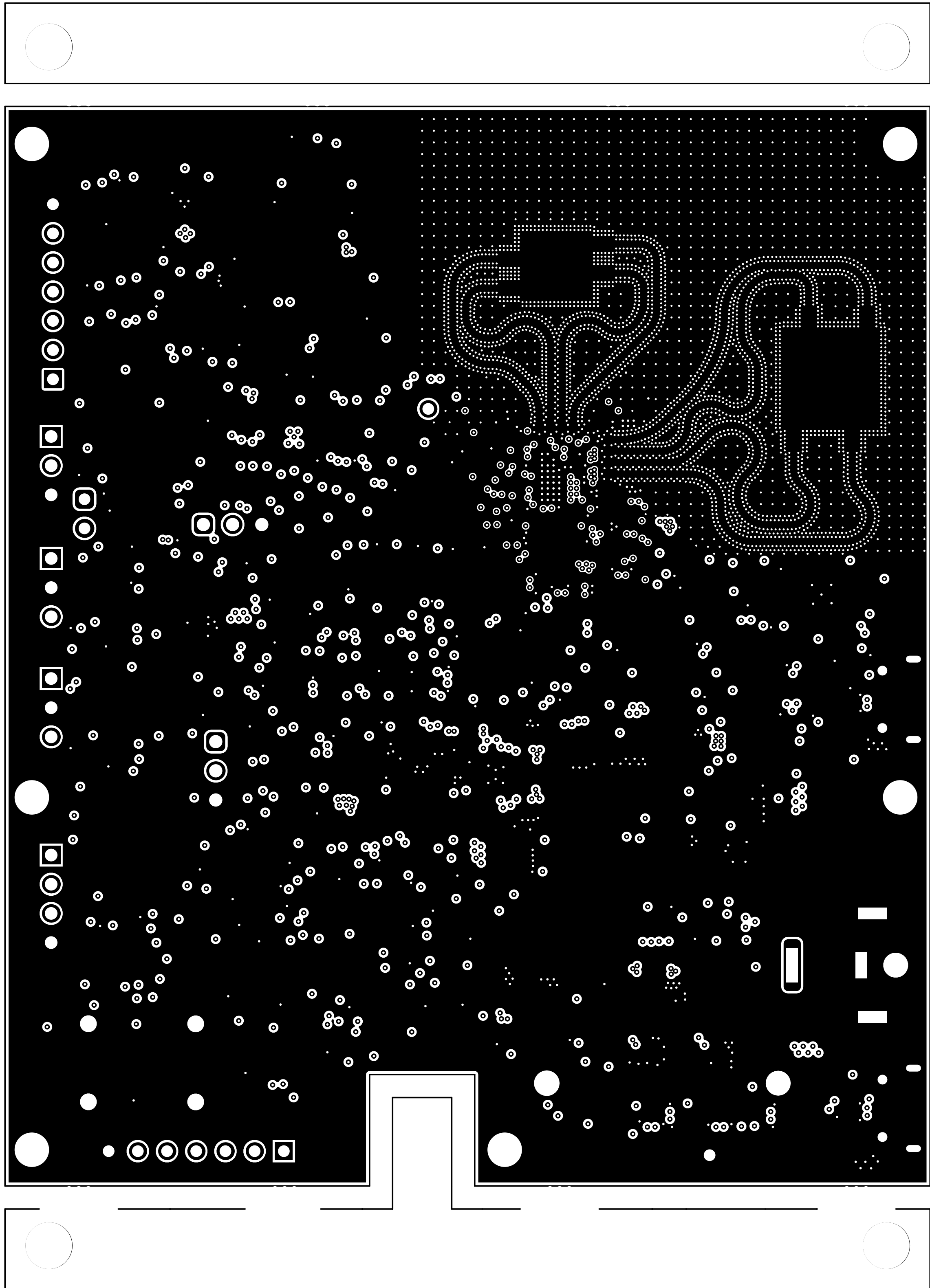
ALL ARTWORK VIEWED FROM TOP SIDE	BOARD #: PROC182	REV: A	SUN REV: 4098 [No modification]
LAYER NAME = Top Overlay	TID #: N/A		
PLOT NAME = Top Overlay	GENERATED : 14-11-2024 19:34:56	TEXAS INSTRUMENTS	



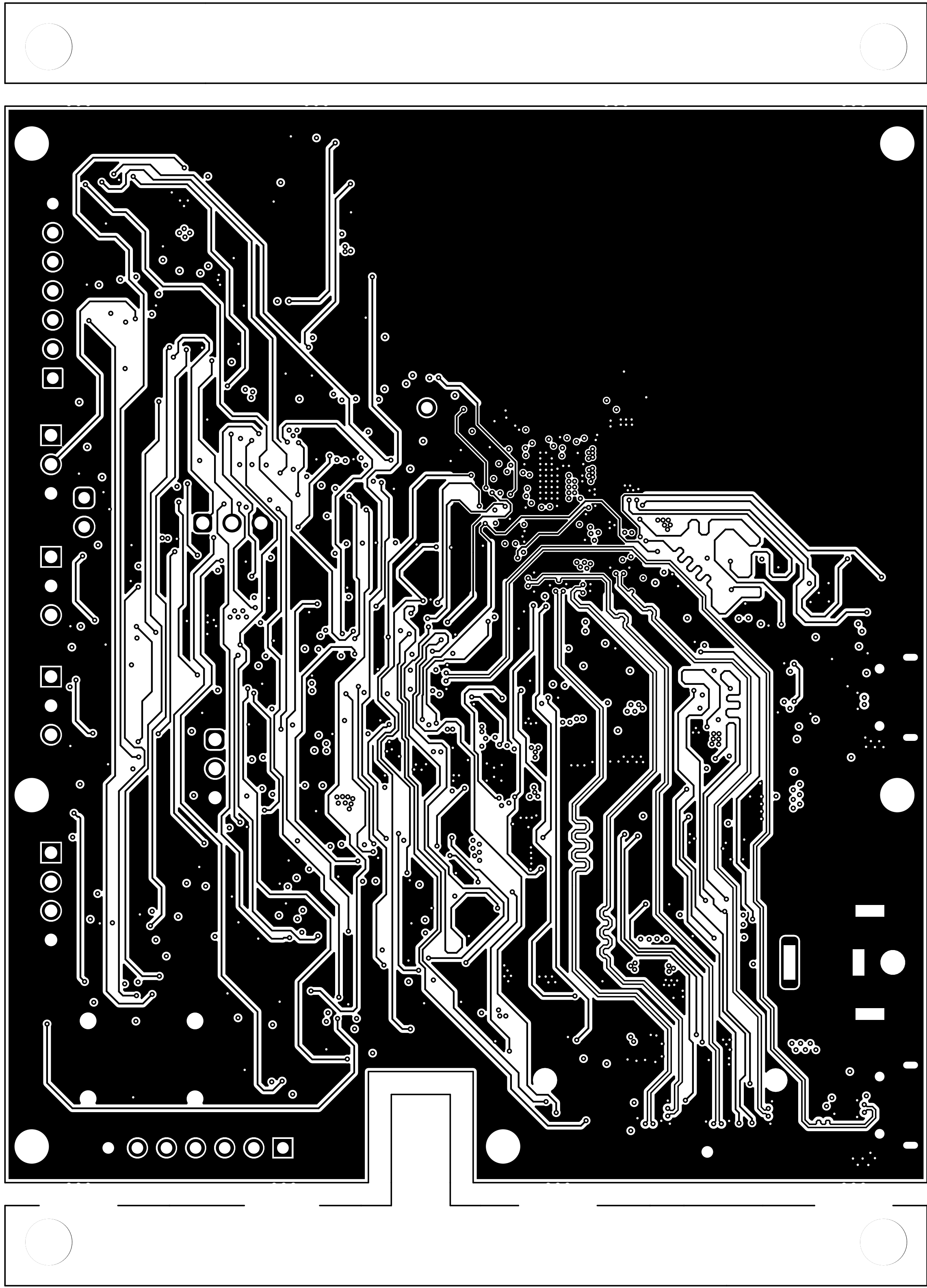
ALL ARTWORK VIEWED FROM TOP SIDE	BOARD #: PROC182	REV: A	SUN REV: 4098 [No modification]
LAYER NAME = Top Solder	TID #: N/A		
PLOT NAME = Top Solder Mask	GENERATED : 14-11-2024 19:34:56		TEXAS INSTRUMENTS



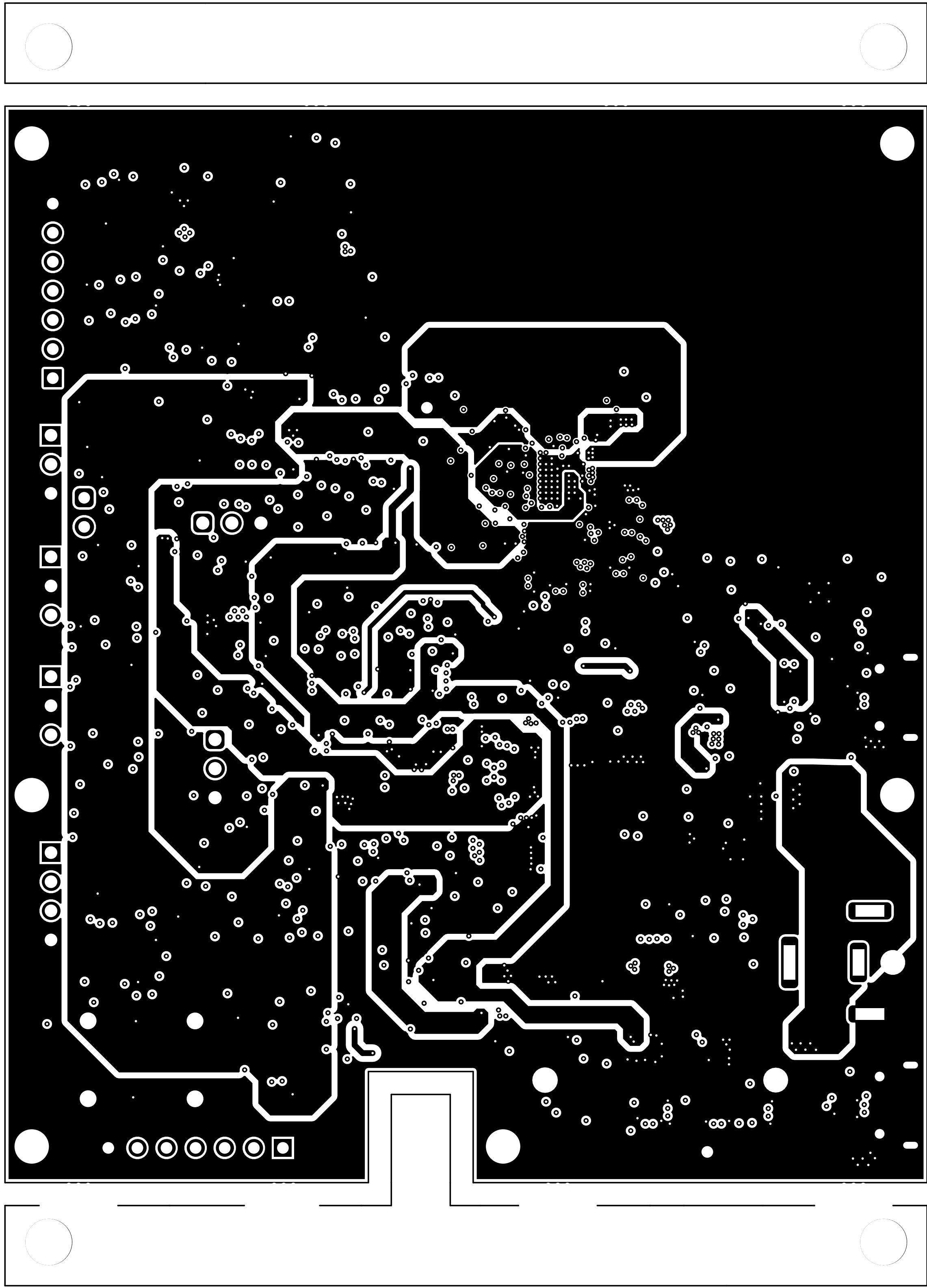
ALL ARTWORK VIEWED FROM TOP SIDE	BOARD #: PROC182	REV: A	SUN REV: 4098 [No modification]
LAYER NAME = Top Layer	TID #: N/A		
PLOT NAME = Top Layer	GENERATED : 14-11-2024 19:34:56		TEXAS INSTRUMENTS



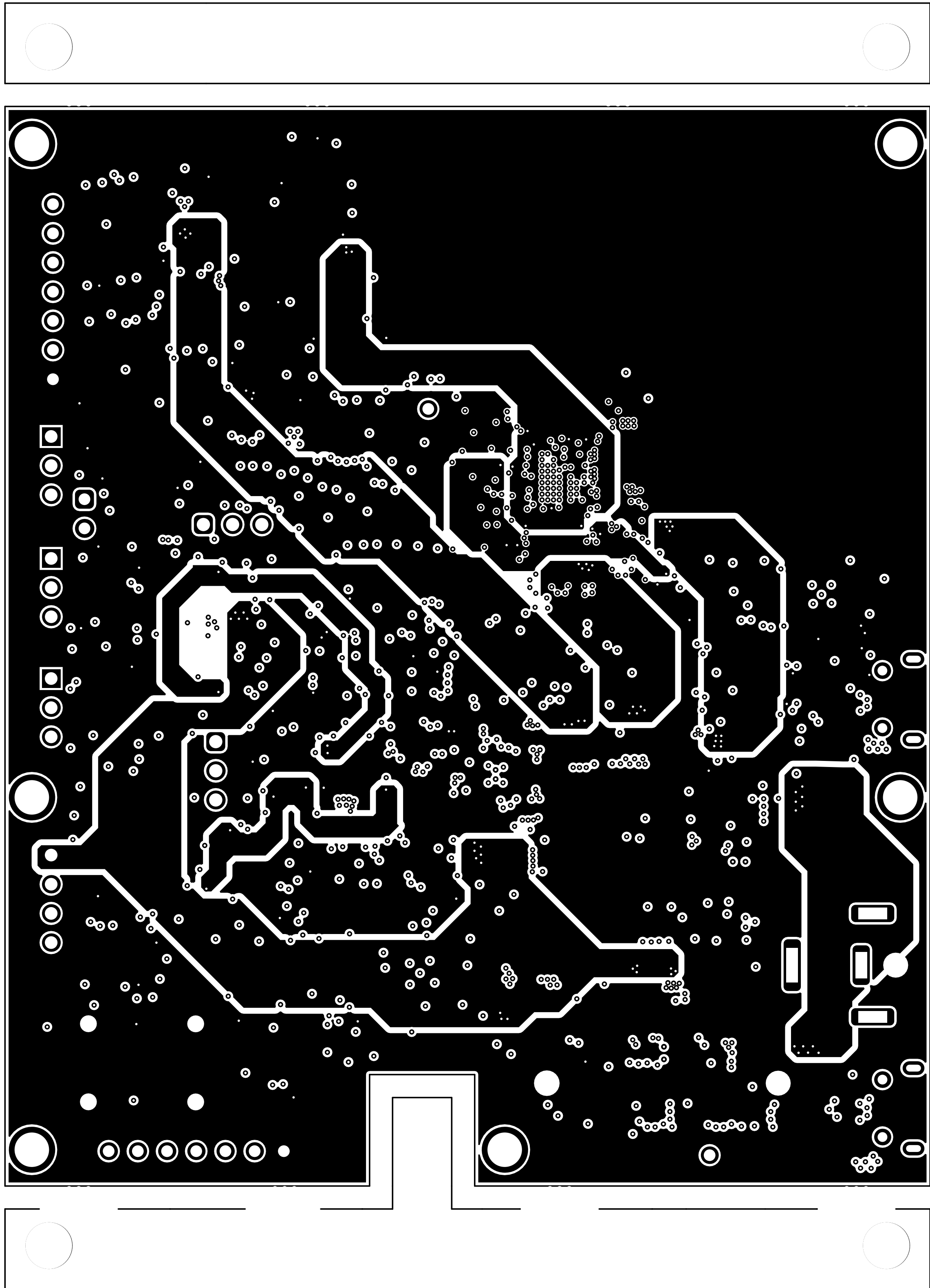
ALL ARTWORK VIEWED FROM TOP SIDE	BOARD #: PROC182	REV: A	SUN REV: 4098 [No modification]
LAYER NAME = L2_GND1	TID #: N/A		
PLOT NAME = Signal Layer 1	GENERATED : 14-11-2024 19:34:56		TEXAS INSTRUMENTS



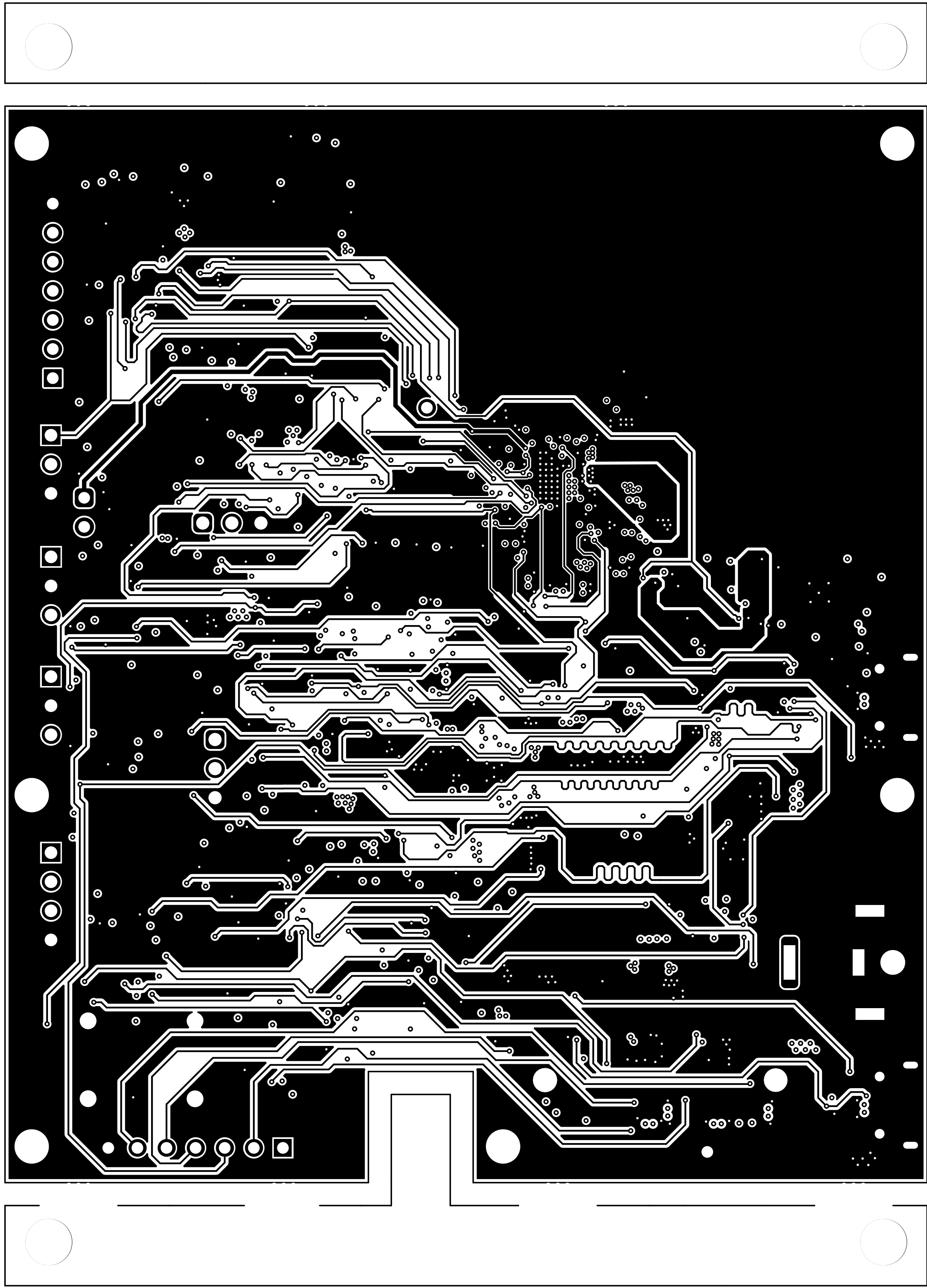
ALL ARTWORK VIEWED FROM TOP SIDE	BOARD #: PROC182	REV: A	SUN REV: 4098 [No modification]
LAYER NAME = L3_SIG1	TID #: N/A		
PLOT NAME = Signal Layer 2	GENERATED : 14-11-2024 19:34:57		TEXAS INSTRUMENTS



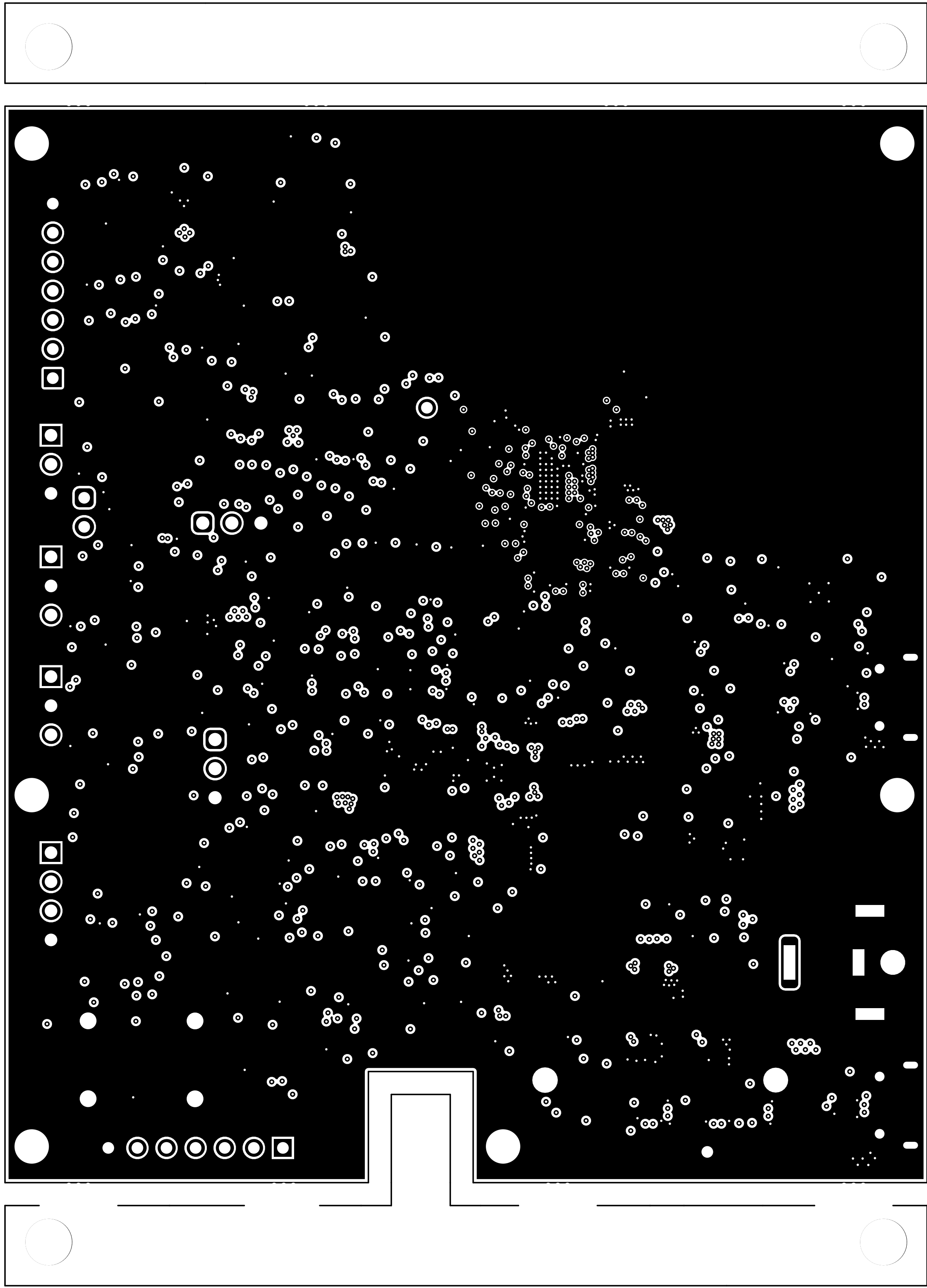
ALL ARTWORK VIEWED FROM TOP SIDE	BOARD #: PROC182	REV: A	SUN REV: 4098 [No modification]
LAYER NAME = L4_PWR1	TID #: N/A		
PLOT NAME = Signal Layer 3	GENERATED : 14-11-2024 19:34:57		TEXAS INSTRUMENTS



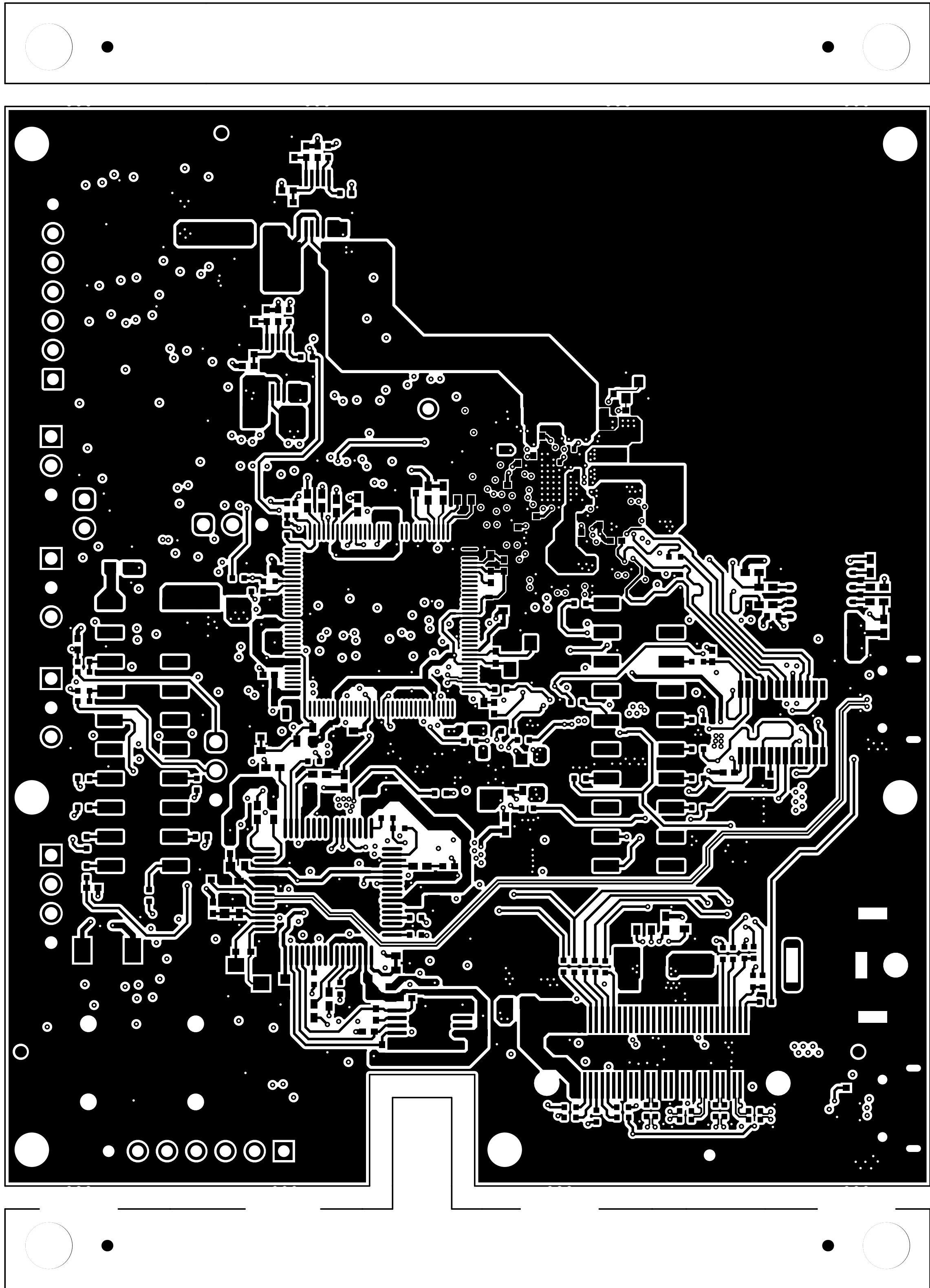
ALL ARTWORK VIEWED FROM TOP SIDE	BOARD #: PROC182	REV: A	SUN REV: 4098 [No modification]
LAYER NAME = L5_PWR2	TID #: N/A		
PLOT NAME = Signal Layer 4	GENERATED : 14-11-2024 19:34:57		TEXAS INSTRUMENTS



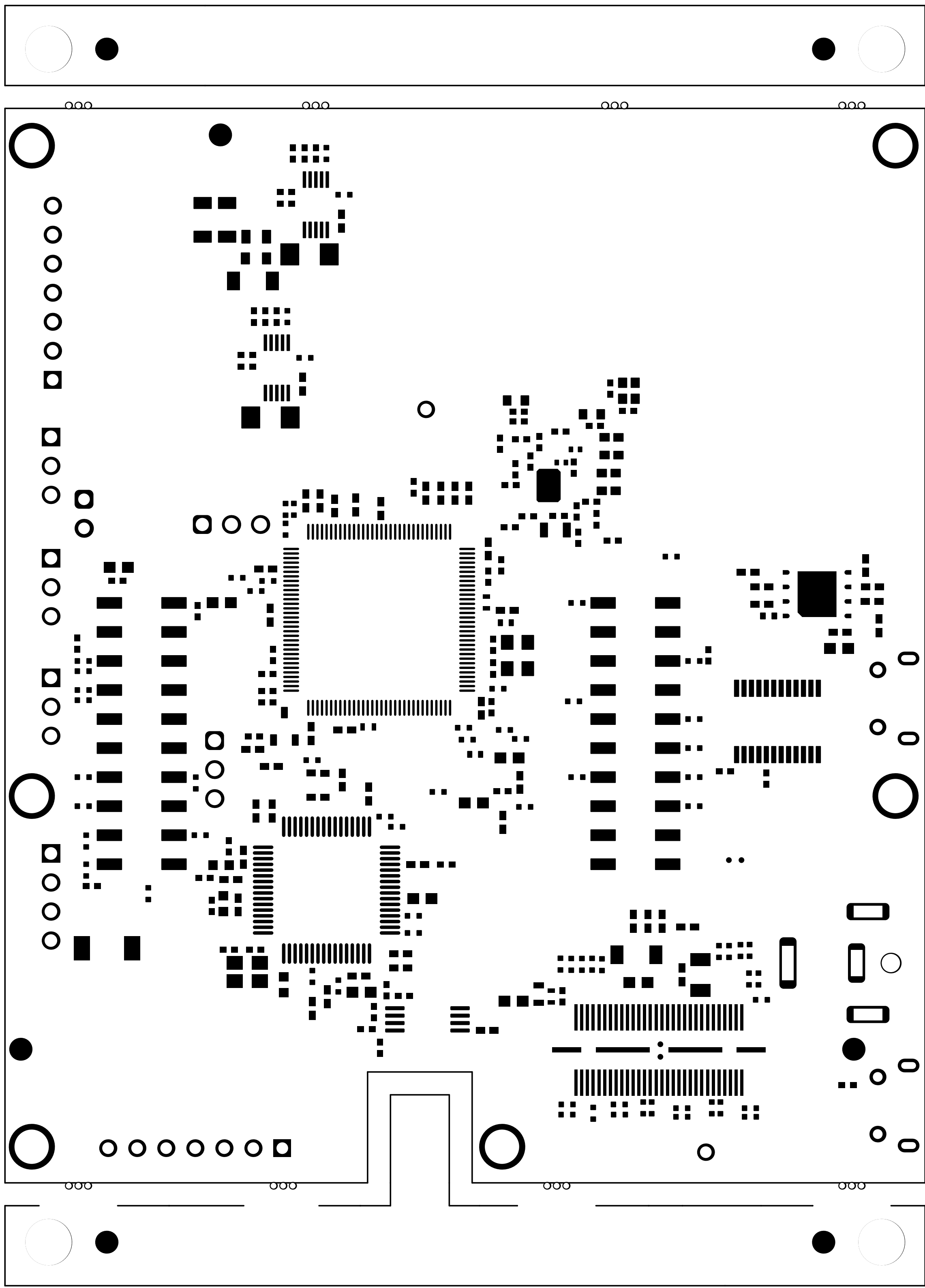
ALL ARTWORK VIEWED FROM TOP SIDE	BOARD #: PROC182	REV: A	SUN REV: 4098 [No modification]
LAYER NAME = L6_SIG2	TID #: N/A		
PLOT NAME = Signal Layer 5	GENERATED : 14-11-2024 19:34:57		TEXAS INSTRUMENTS



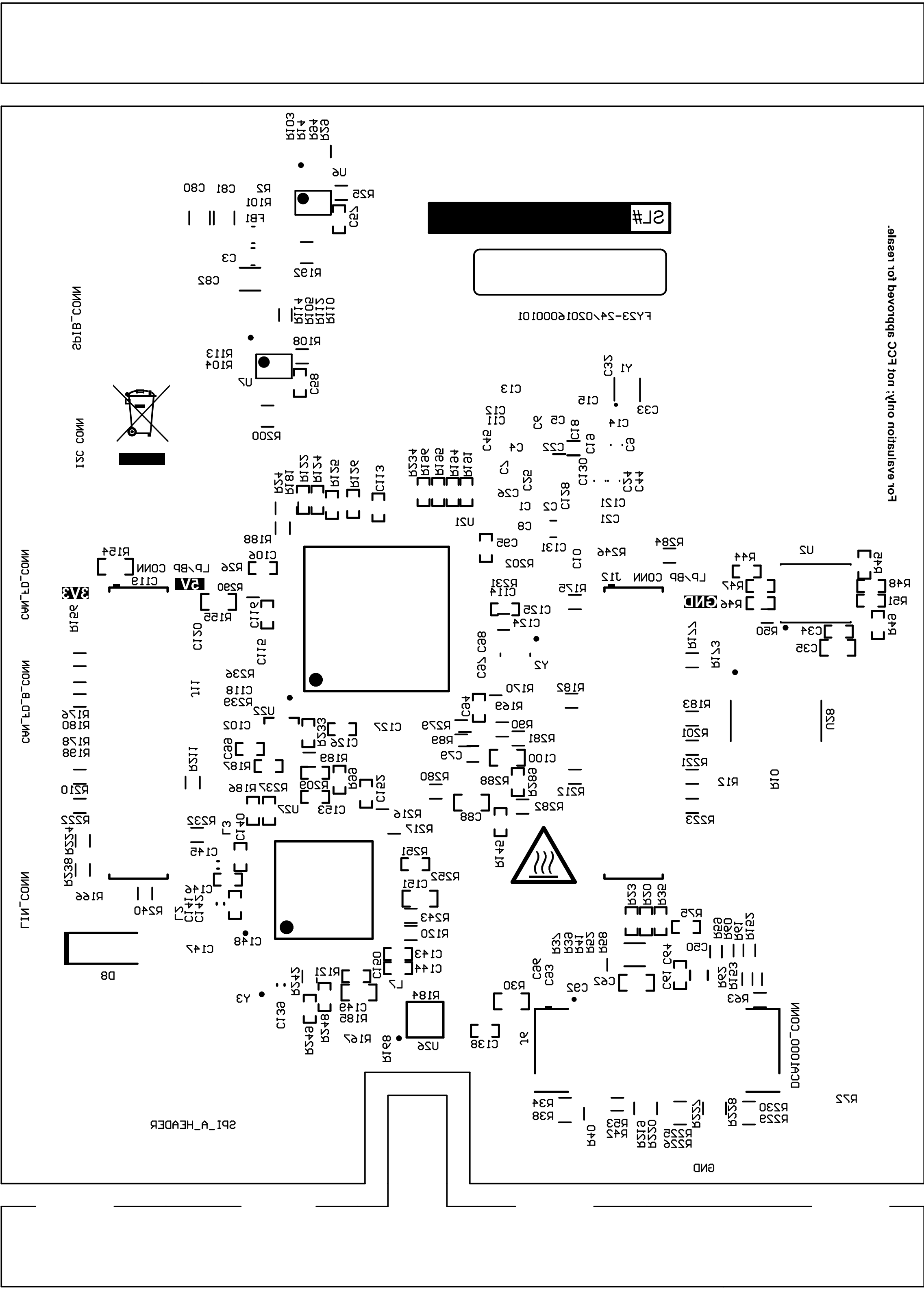
ALL ARTWORK VIEWED FROM TOP SIDE	BOARD #: PROC182	REV: A	SUN REV: 4098 [No modification]
LAYER NAME = L7_GND2	TID #: N/A		
PLOT NAME = Signal Layer 6	GENERATED : 14-11-2024 19:34:57		TEXAS INSTRUMENTS



ALL ARTWORK VIEWED FROM TOP SIDE	BOARD #: PROC182	REV: A	SUN REV: 4098 [No modification]
LAYER NAME = Bottom Layer	TID #: N/A		
PLOT NAME = Bottom Layer	GENERATED : 14-11-2024 19:34:57		TEXAS INSTRUMENTS



ALL ARTWORK VIEWED FROM TOP SIDE	BOARD #: PROC182	REV: A	SUN REV: 4098 [No modification]
LAYER NAME = Bottom Solder	TID #: N/A		
PLOT NAME = Bottom Solder Mask	GENERATED : 14-11-2024 19:34:57		TEXAS INSTRUMENTS



ALL ARTWORK VIEWED FROM TOP SIDE	BOARD #: PROC182	REV: A	SUN REV: 4098 [No modification]
LAYER NAME = Bottom Overlay	TID #: N/A		
PLOT NAME = Bottom Overlay	GENERATED : 14-11-2024 19:34:58		TEXAS INSTRUMENTS

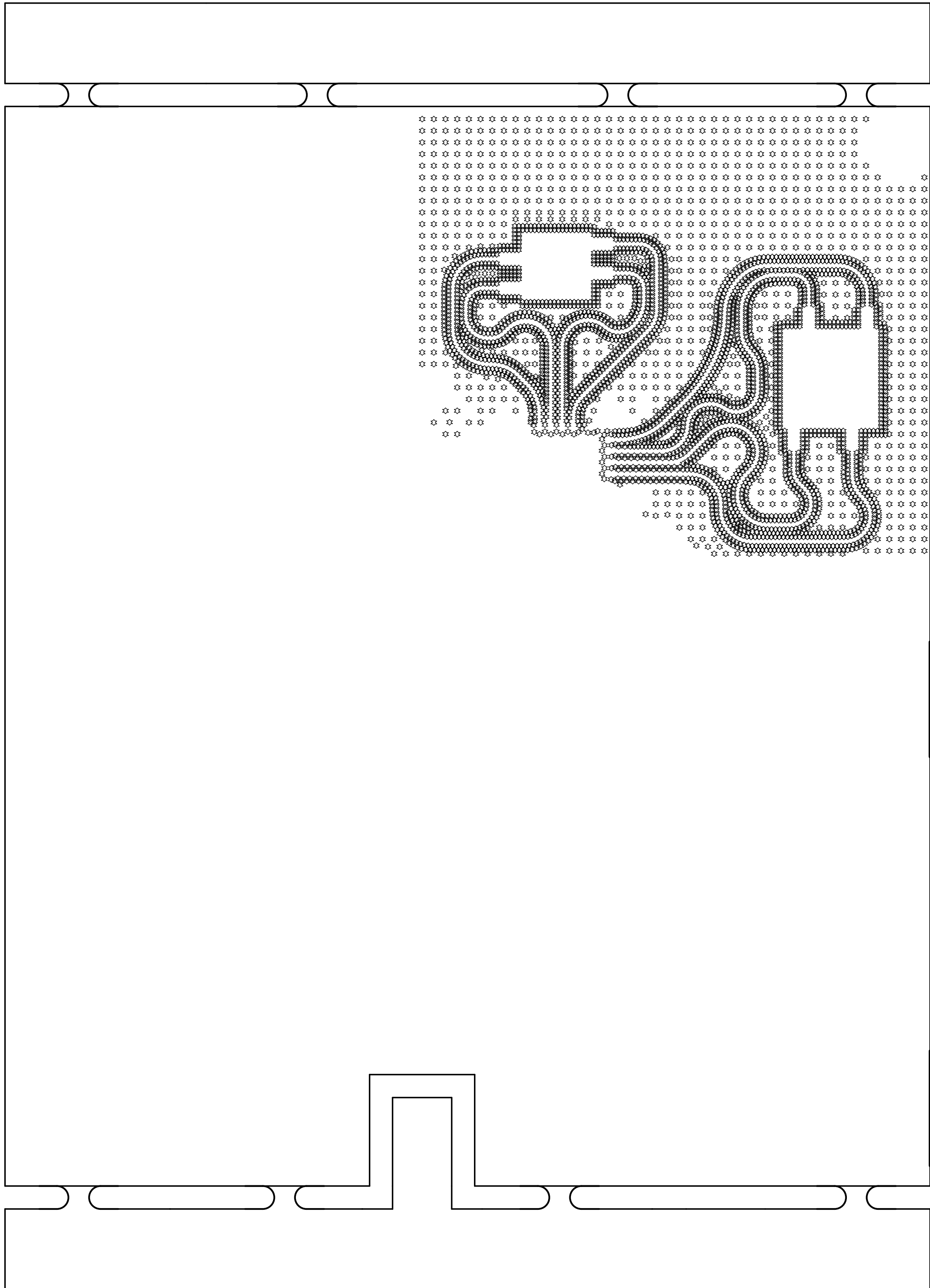
Symbol	Count	Hole Size	Hole Length	Plated	Hole Type	Drill Layer Pair	Hole Tolerance (+)	Hole Tolerance (-)
⊙	2	7.87mil (0.200mm)	-	PTH	Round	Top Layer - Bottom Layer		
⊕	4	7.87mil (0.200mm)	-	PTH	Round	Top Layer - Bottom Layer	3.00mil (0.076mm)	3.00mil (0.076mm)
▽	911	8.00mil (0.203mm)	-	PTH	Round	Top Layer - Bottom Layer	3.00mil (0.076mm)	3.00mil (0.076mm)
A	24	19.69mil (0.500mm)	-	NPTH	Round	Top Layer - Bottom Layer		
⊗	4	23.62mil (0.600mm)	51.18mil (1.300mm)	PTH	Slot	Top Layer - Bottom Layer	3.00mil (0.076mm)	3.00mil (0.076mm)
◇	4	33.47mil (0.850mm)	-	PTH	Round	Top Layer - Bottom Layer	3.00mil (0.076mm)	3.00mil (0.076mm)
★	4	35.43mil (0.900mm)	-	NPTH	Round	Top Layer - Bottom Layer	3.00mil (0.076mm)	3.00mil (0.076mm)
B	1	39.37mil (1.000mm)	90.55mil (2.300mm)	PTH	Rectangle	Top Layer - Bottom Layer	3.00mil (0.076mm)	3.00mil (0.076mm)
C	2	39.37mil (1.000mm)	98.43mil (2.500mm)	PTH	Rectangle	Top Layer - Bottom Layer	3.00mil (0.076mm)	3.00mil (0.076mm)
⊗	1	39.37mil (1.000mm)	118.11mil (3.000mm)	PTH	Rectangle	Top Layer - Bottom Layer	3.00mil (0.076mm)	3.00mil (0.076mm)
✕	11	40.00mil (1.016mm)	-	PTH	Round	Top Layer - Bottom Layer	3.00mil (0.076mm)	3.00mil (0.076mm)
⊕	2	40.16mil (1.020mm)	-	NPTH	Round	Top Layer - Bottom Layer	3.00mil (0.076mm)	3.00mil (0.076mm)
✕	7	40.16mil (1.020mm)	-	PTH	Round	Top Layer - Bottom Layer	3.00mil (0.076mm)	3.00mil (0.076mm)
○	13	43.31mil (1.100mm)	-	PTH	Round	Top Layer - Bottom Layer	3.00mil (0.076mm)	3.00mil (0.076mm)
▽	6	45.28mil (1.150mm)	-	PTH	Round	Top Layer - Bottom Layer	3.00mil (0.076mm)	3.00mil (0.076mm)
D	1	62.99mil (1.600mm)	-	NPTH	Round	Top Layer - Bottom Layer	3.00mil (0.076mm)	3.00mil (0.076mm)
□	6	118.11mil (3.000mm)	-	PTH	Round	Top Layer - Bottom Layer	3.00mil (0.076mm)	3.00mil (0.076mm)
▣	4	160.00mil (4.064mm)	-	NPTH	Round	Top Layer - Bottom Layer	2.00mil (0.051mm)	2.00mil (0.051mm)
	1007 Total							

Slot definitions : Routed Path Length = Calculated from tool start centre position to tool end centre position.
Hole Length = Routed Path Length + Tool Size = Slot length as defined in the PCB layout

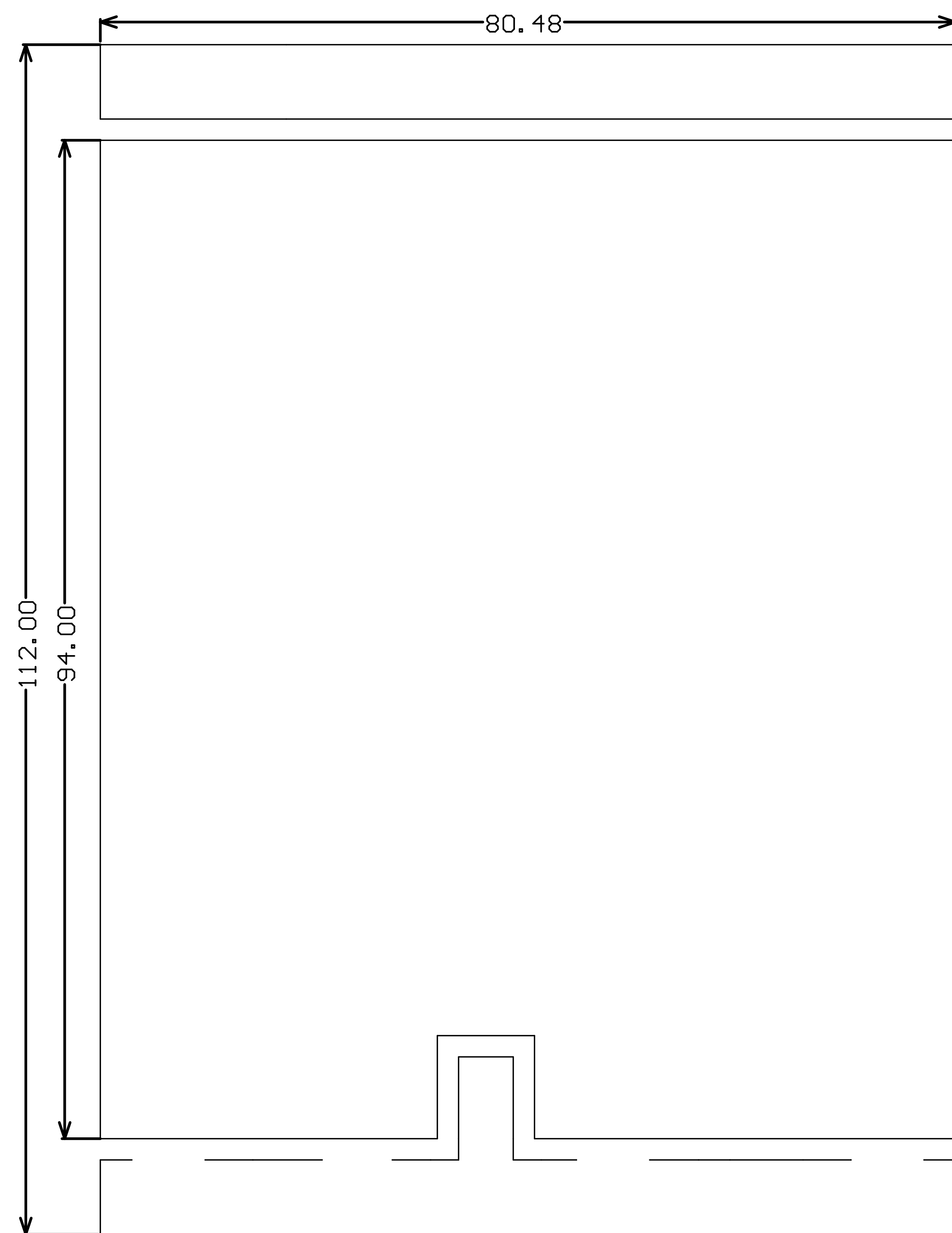


ALL ARTWORK VIEWED FROM TOP SIDE	BOARD #: PROC182	REV: A	SUN REV: 4098 [No modification]
LAYER NAME = Drill Drawing	TID #: N/A		
PLOT NAME = Drill Drawing	GENERATED : 14-11-2024 19:34:58		TEXAS INSTRUMENTS

Symbol	Count	Hole Size	Plated	Hole Type	Drill Layer Pair	Hole Tolerance (+)	Hole Tolerance (-)
✧	3453	7.00mil (0.178mm)	PTH	Round	Top Layer - L2_GND1	0.00mil (0.000mm)	0.00mil (0.000mm)
	3453 Total						



ALL ARTWORK VIEWED FROM TOP SIDE	BOARD #: PROC182	REV: A	SUN REV: 4098 [No modification]
M1 Board Outline LAYER NAME = Drill Drawing	TID #: N/A		
PLOT NAME = Drill Drawing	GENERATED : 14-11-2024 19:35:01	TEXAS INSTRUMENTS	



ALL ARTWORK VIEWED FROM TOP SIDE	BOARD #: PROC182	REV: A	SUN REV: 4098 [No modification]
LAYER NAME = M2 Board Dimensions	TID #: N/A		
PLOT NAME = Board Dimensions	GENERATED : 14-11-2024 19:35:14		TEXAS INSTRUMENTS